

DOs & DON'Ts

NEWS, VIEWS AND GLAMOURAMA

Jennifer Garner Our new FROW friend

The star of *Dallas Buyers Club* (and wife of Ben Affleck) is now the face of Max Mara's accessories campaign. We met at the label's Tokyo show to chat style smarts...



By Gemma Askham. Photographs: Alamy, Landmark Media, Getty Images, Film Magic

"I used to totally wing fashion" "Until I realised what worked for me: neutrals, and a cut that isn't too tight or too loose. Some people are born with an innate fashion sense; some people know a lot about fashion, I had neither."

"I have seen photos of Ben as Batman"

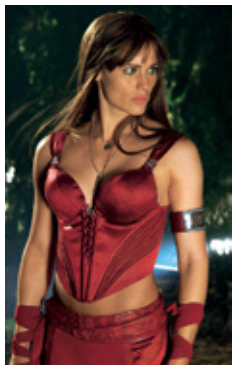
"I haven't seen the real thing yet, but I have a feeling the cape will take up too much room in our closet and shove all my things out of the way!"

"My Tokyo souvenirs?"

"Japanese lanterns for my kids [Violet, Seraphina and Samuel]. You'd think they'd want expensive toys, but that's what they asked for."

"My favourite Japanese invention?"

"The heated toilet seat. I'd take that back! The whole toilet situation is just better in Japan."



"I never kept my comic-book film costumes"

"I'm always so happy to take them off on the last day of filming that nothing in me wants to hold on to them."

"Seeing myself on a billboard? Weird!"

"My friends sent me pictures of the huge billboard in Venice's Piazza San Marco that features my campaign as the face of Max Mara accessories. It's very exciting, but very, very surreal."

"The red carpet can be scary"

"You have days when the last thing you want to do is walk up one; if you've had a bad day or a baby or put on a few pounds, I'm not a stick, I'm not someone who starves myself. I just go forward and do the best I can." ▶

